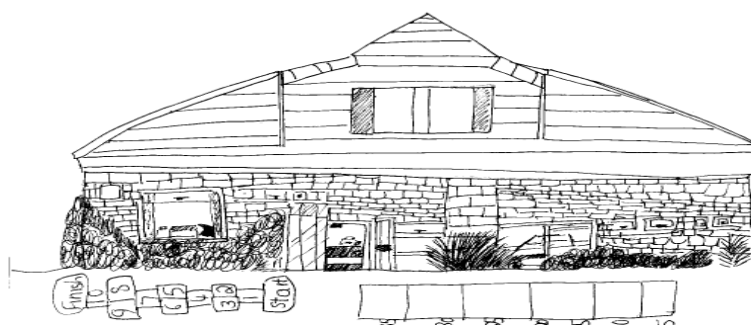


Graveley Primary School

A Church of England (VC) School



Personal, Social, Health and Education **(PSHE) Policy**

(Including Relationships, Sex and Health Education)

Date of policy	Summer term 2022
Ratified by the Governing Board	13/7/2022
Date of next review	Summer term 2024

**"With God, all things are possible."
Matthew 19.26**

1.0 - CONTEXT

All schools must provide a curriculum that is broadly based, balanced and meets the needs of all pupils.

Under section 78 of the Education Act 2002 and the Academies Act 2010, a PSHE curriculum which:

- Promotes the spiritual, moral, cultural, mental and physical development of pupils at the school and of society, and
- Prepares pupils at the school for the opportunities, responsibilities and experiences of later life.

2.0 - THE ROLE OF THE HEADTEACHER AND GOVERNING BODY

It is the responsibility of the Governors to ensure that as well as fulfilling their legal obligations, the governing boards or management committee should also make sure that:

- All pupils make progress in achieving the expected educational outcomes in regard to PSHE/RSHE
- PSHE/RSHE is well led, effectively managed and well planned
- The quality of PSHE/RSHE provision is subject to regular and effective self-evaluation
- Teaching is delivered in ways that are accessible to all pupils with SEND
- Clear information is provided for parents on the subject content and the right to request that their child is withdrawn
- The subjects are resourced, staffed and timetabled in a way that ensures that the school can fulfil its legal obligations

3.0 - MONITORING AND REVIEW

The Curriculum and Standards Committee of the governing body monitors this policy on an annual basis. This committee reports its findings and recommendations to the full governing body, as necessary, if the policy needs modification. The Curriculum and Standards Committee gives serious consideration to any comments from parents about the PSHE (RSHE) programme, and makes a record of all such comments. Governors scrutinise and ratify teaching materials to check they are in accordance with the school's ethos.

4.0 - INTRODUCTION

This document is a statement of the aims, principals and strategies for the teaching and learning of PSHE and RSHE at Graveley Primary School. Here, at Graveley Primary School we value PSHE as one way to support children's development as human beings, to enable them to understand and respect who they are, to empower them with a voice and to equip them for life and learning.

5.0 - ALIGNING/SUPPORTING DOCUMENTS

This policy should be read alongside the Graveley School PSHE/RSHE Curriculum document, which sets out the inspiration, implementation and impact of our curriculum.

This PSHE policy is also informed by existing DfE guidance:

- Keeping Children Safe in Education (statutory guidance)
- Respectful School Communities: Self Review and Signposting Tool (a tool to support a whole school approach that promotes respect and discipline)
- Behaviour and Discipline in Schools (advice for schools, including advice for appropriate behaviour between pupils)
- Equality Act 2010 and schools
- SEND code of practice: 0 to 25 years (statutory guidance)
- Alternative Provision (statutory guidance)
- Mental Health and Behaviour in Schools (advice for schools)
- Preventing and Tackling Bullying (advice for schools, including advice on cyberbullying)

**"With God, all things are possible."
Matthew 19.26**

- Sexual violence and sexual harassment between children in schools (advice for schools)
- The Equality and Human Rights Commission Advice and Guidance (provides advice on avoiding discrimination in a variety of educational contexts)
- Promoting Fundamental British Values as part of SMSC in schools (guidance for maintained schools on promoting basic important British values as part of pupils' spiritual, moral, social and cultural (SMSC))
- SMSC requirements for independent schools (guidance for independent schools on how they should support pupils' spiritual, moral, social and cultural development).

It is also aligned with the Church of England's:

"A CHARTER FOR FAITH SENSITIVE AND INCLUSIVE RELATIONSHIPS EDUCATION, RELATIONSHIPS AND SEX EDUCATION (RSE) AND HEALTH EDUCATION (RSHE)"

and draws on the advice given in the Church of England document:

'VALUING ALL GOD'S CHILDREN: GUIDANCE FOR CHURCH OF ENGLAND SCHOOLS ON CHALLENGING HOMOPHOBIC, BIPHOBIC AND TRANSPHOBIC BULLYING'
(Church of England Education Office, second edition updated summer 2019).

The Jigsaw Programme is aligned to the PSHE Association Programmes of Study for PSHE. The following 'Jigsaw' documents should also be read alongside the policy.

- Jigsaw 3-11 and statutory Relationships and Health Education (mapping document)
- Including and valuing all children. What does Jigsaw teach about LGBTQ relationships?

6.0 EQUALITY

This policy is tied closely to school's Equalities Plan.

The DfE Guidance 2019 (p. 15) states,

"Schools should ensure that the needs of all pupils are appropriately met, and that all pupils understand the importance of equality and respect. Schools must ensure they comply with the relevant provisions of the Equality Act 2010 under which sexual orientation and gender reassignment are amongst the protected characteristics..."

At the point at which schools consider it appropriate to teach their pupils about LGBT (Lesbian, Gay, Bisexual, Transgender), they should ensure this content is fully integrated into their programmes of study for this area of the curriculum rather than delivered as a stand-alone unit or lesson. Schools are free to determine how they do this, and we expect all pupils to have been taught LGBT content at a timely point as part of this area of the curriculum".

This can also have an impact on any anti-bullying policies in regard to these characteristics being the reason for the issue. The Church of England document "Valuing all God's Children", 2019, states:

"Schools should ensure that they have clear anti-bullying policies on preventing and tackling homophobic, biphobic and transphobic behaviour and language and that these policies are known and understood by all members of the school community. School leaders should present a clear message that HBT bullying will not be tolerated and that there can be no justification for this negative behaviour based on the Christian faith or the Bible. Schools should ensure that pupils understand how to report incidents. Pupils should be confident that if they report bullying it will be taken seriously."

**"With God, all things are possible."
 Matthew 19.26**

It also asserts:

"Central to Christian theology is the truth that every single one of us is made in the image of God. Every one of us is loved unconditionally by God. We must avoid, at all costs, diminishing the dignity of any individual to a stereotype or a problem. Church of England schools offer a community where everyone is a person known and loved by God, supported to know their intrinsic value" (page 1)

"Opportunities to discuss issues to do with self-esteem, identity and bullying, including HBT (homophobic, biphobic and transphobic) bullying, should be included in physical, social, health and economic education or citizenship programmes. The curriculum should offer opportunities for pupils to learn to value themselves and their bodies. Relationships and sex education should take LGBT people into account." (Page 6)

At Graveley Primary School we promote respect for all and value every individual child. We also respect the right of our children, their families and our staff, to hold beliefs, religious or otherwise, and understand that sometimes these may be in tension with our approach to some aspects of Relationships, Health and Sex Education.

For further explanation as to how we approach LGBT relationships in the PSHE (RSHE) Programme please see:

'Including and valuing all children. What does Jigsaw teach about LGBTQ relationships?'

7.0 - PSHE

We teach Personal, Social, Health Education using a whole-school approach to underpin children's development as people and because we believe that this also supports their learning capacity.

We use the Jigsaw Programme as a Scheme of Work which brings consistency and progression to our children's learning in this vital curriculum area. The overview of the programme can be seen on the school website and PSHE Curriculum Document and Appendix 1.

This also supports the 'Personal Development' and 'Behaviour and Attitude' aspects required under the Ofsted Inspection Framework, as well as significantly contributing to the school's Safeguarding and Equality Duties, the Government's British Values agenda and the SMSC (Spiritual, Moral, Social, Cultural) development opportunities provided for our children.

8.0 - RSHE

From the Autumn term 2020 the teaching of Relationships and Health Education has become a statutory component of the National Curriculum and at Graveley School, as such, we following the below guidance:

"The Relationships Education, Relationships and Sex Education and Health Education (England) Regulations 2019, made under sections 34 and 35 of the Children and Social Work Act 2017, make Relationships Education compulsory for all pupils receiving primary education...They also make Health Education compulsory in all schools except independent schools. Personal, Social, Health and Economic Education(PSHE) continues to be compulsory in independent schools."

DfE Guidance p.8

"Today's children and young people are growing up in an increasingly complex world and living their lives seamlessly on and offline. This presents many positive and exciting opportunities, but also challenges and risks. In this environment, children and young people need to know how to be safe and healthy, and how to manage their academic, personal and social lives in a positive way."

"This is why we have made Relationships Education compulsory in all primary schools in England...as well as making Health Education compulsory in all state-funded schools."

"In primary schools, we want the subjects to put in place the key building blocks of healthy, respectful relationships, focusing on family and friendships, in all contexts, including online. This will sit alongside the essential understanding of how to be healthy."

**"With God, all things are possible."
Matthew 19.26**

"These subjects represent a huge opportunity to help our children and young people develop. The knowledge and attributes gained will support their own, and others' wellbeing and attainment and help young people to become successful and happy adults who make a meaningful contribution to society."

Secretary of State Foreword DfE Guidance 2019 p.4-5

"Schools are free to determine how to deliver the content set out in the DfE guidance 2019 in the context of a broad and balanced curriculum. Effective teaching in these subjects will ensure that core knowledge is broken down into units of manageable size and communicated clearly to pupils, in a carefully sequenced way, within a planned programme of lessons."

DfE Guidance p.8

"All schools must have in place a written policy for Relationships Education and RSE."

DfE Guidance p.11

We include the statutory Relationships and Health Education within our whole-school PSHE Programme.

9.0 - Withdrawal from RSE Lessons

Parents/Carers have the right to withdraw their children from Sex Education provided at school except for those parts included in the statutory National Curriculum Science and that included within the statutory Relationship and Health Education. Those parents/carers wishing to exercise this right are invited to speak to the headteacher and/or PSHE lead (Laura Forster) in school who will explore any concerns and discuss an impact that withdrawal may have on the child. **Parents/ Carers cannot withdraw from any aspect of Relationship Education or Health Education lessons covering the changing adolescent body (puberty).**

10.0 – PLANNING, DELIVERY AND ASSESSMENT

10.1 - Whole-school approach

At Graveley Primary School in KS1 and KS2 we allocate 1 hour to PSHE each week in order to teach the PSHE knowledge and skills in a developmental and age-appropriate way. In EYFS, PSED is delivered weekly with 15 minutes of direct teaching which is then consolidated through play.

These explicit lessons are reinforced and enhanced in many ways: Assemblies and collective worship, praise and reward systems, Learning Charter, through relationships child-to-child, adult to child and adult-to-adult across the school. We aim to 'live' what is learnt and apply it to everyday situations in the school community. In all key stages, children's learning in PSHE will be recorded in floor books, allowing the children to review and discuss previous learning by looking at photos, work and comments from lessons and linking to current learning.

To ensure progression and a spiral curriculum, we use Jigsaw, the mindful approach to PSHE, as our chosen teaching and learning programme and tailor it to our children's needs. The mapping document: Jigsaw 3-11 and statutory Relationships and Health Education, shows exactly how Jigsaw and therefore our school, meets the statutory Relationships and Health Education requirements. This information forms part of the PSHE/RSHE Curriculum Document.

Jigsaw covers all areas of PSHE for the primary phase including statutory Relationships and Health Education. See Appendix 1 for an overview of the learning sequences and specific content for each year group.

Jigsaw's update policy ensures we are always using the most up to date teaching materials and that our teachers are well-supported.

**"With God, all things are possible."
Matthew 19.26**

10.2 – Outcomes for RSHE

10.2.1 – Relationships Education

Relationships Education in primary schools will cover 'Families and people who care for me', 'Caring friendships', 'Respectful relationships', 'Online relationships', and 'Being safe'.

10.2.2 - Health Education

Health Education in primary schools will cover 'Mental wellbeing', 'Internet safety and harms', 'Physical health and fitness', 'Healthy eating', 'Drugs, alcohol and tobacco', 'Health and prevention', 'Basic First Aid', 'Changing adolescent body'.

The expected outcomes for each of these elements can be found further on in this policy. The way the Jigsaw Programme covers these is explained in the mapping document: Jigsaw 3-11 and Statutory Relationships and Health Education.

10.2.3 - Sex Education

The DfE Guidance 2019 (p.23) recommends that all primary schools 'have a sex education programme tailored to the age and the physical and emotional maturity of the pupils.

However, 'Sex Education is not compulsory in primary schools'. (p. 23)

At Graveley Primary School, we believe children should understand the scientific facts about human reproduction before they leave primary school so we define Sex Education as understanding human reproduction. We intend to teach this as part of our science curriculum.

10.3 - Differentiation/ SEN

Jigsaw is written as a universal core curriculum provision for all children, inclusivity is part of its philosophy. Teachers will need, as always, to tailor each piece (lesson) to meet the needs of the children in their classes. To support this differentiation, many Jigsaw pieces (lessons) suggest creative learning activities that allow children to choose the media with which they work and give them scope to work to their full potential.

10.4 - Assessment

Teachers will ensure children are making progress with their learning throughout the delivery of the PSHE curriculum. Therefore, each puzzle (unit of work) has a built-in assessment task, usually in lesson (piece) 6. This task is a formal opportunity for the teacher assessment, but also offers children the chance to assess their own learning and have a conversation with the teacher about their learning. As part of the help me reflect section of every Jigsaw lesson, children can complete a self/peer assessment using the Jigsaw learning resources that accompanies each lesson. All work is collated as part of the children's Jigsaw Journals.

Each puzzle (unit of work) has a set of three level descriptors for each year group:

Working towards

Working at

Working beyond

This supports teachers in tracking each child's Jigsaw learning progress throughout the year.

**"With God, all things are possible."
Matthew 19.26**

11.0 - SAFEGUARDING AND CONFIDENTIALITY

Teachers need to be aware that sometimes disclosures may be made during PSHE lessons, in which case, safeguarding procedures must be followed immediately. Sometimes it is clear that certain children may need time to talk one-to-one after the lesson closes. It is important to allow the time and appropriate staffing for this to happen. If disclosures occur, the school's safeguarding policy is followed.

Issues that we address that are likely to be sensitive and controversial because they have a political, social or personal impact or deal with values and beliefs include: family lifestyles and values, physical and medical issues, financial issues, bullying and bereavement.

Teachers will take all reasonable, practical steps to ensure that, where political or controversial issues are brought to pupils' attention, they are offered a balanced presentation of opposing views. Teachers will adopt strategies that seek to avoid bias on their part and will teach pupils how to recognise bias and evaluate evidence. Teachers will seek to establish a classroom climate in which all pupils are free from any fear of expressing reasonable points of view that contradict those held by either their class teachers or their peers.

**"With God, all things are possible."
Matthew 19.26**

APPENDIX 1

The table below gives the learning theme of each of the six Puzzles (units) and these are taught across the school; the learning deepens and broadens every year.

Term	Puzzle (Unit)	Content
Autumn 1:	Being Me in My World	Includes understanding my own identity and how I fit well in the class, school and global community. Jigsaw Charter established.
Autumn 2:	Celebrating Difference	Includes anti-bullying (cyber and homophobic bullying included) and understanding
Spring 1:	Dreams and Goals	Includes goal-setting, aspirations, who do I want to become and what would I like to do for work and to contribute to society
Spring 2:	Healthy Me	Includes drugs and alcohol education, self-esteem and confidence as well as healthy lifestyle choices, sleep, nutrition, rest and exercise
Summer 1:	Relationships	Includes understanding friendship, family and other relationships, conflict resolution and communication skills, bereavement and loss
Summer 2:	Changing Me	Includes Relationships and Sex Education in the context of coping positively with change

**“With God, all things are possible.”
Matthew 19.26**

This grid below shows specific RSE content for each year group:

AGE

4-5	Family life; making friends; falling out and making up; being a good friend; dealing with bullying; growing up - how have I changed from baby to now; bodies (NOT including names of sexual parts); respecting my body and looking after it e.g. personal hygiene.
5-6	Recognising bullying and how to deal with it; celebrating differences between people; making new friends; belonging to a family; being a good friend; physical contact preferences; people who help us; qualities as a friend and person; celebrating people who are special to me; life cycles – animal and human; changes in me; changes since being a baby; differences between female and male bodies (correct terminology: penis, vagina, testicles, vulva); respecting my body and understand which parts are private.
6-7	Assumptions and stereotypes about gender; understanding bullying; standing up for self and others; making new friends; gender diversity; celebrating difference and remaining friends; learning with others; group co-operation; different types of family; physical contact boundaries; friendship and conflict; secrets (including those that might worry us); trust and appreciation; expressing appreciation for special relationships; life cycles in nature; growing from young to old; increasing independence; differences in female and male bodies (correct terminology); assertiveness; appreciate that some parts of my body are private.
7-8	Challenging assumptions; judging by appearance; accepting self and others; understanding influences; understanding bullying including the role of the bystander; problem-solving in relationships; identifying how special and unique everyone is; first impressions; working in a group; celebrating contributions of others; healthier friendships; group dynamics; assertiveness; peer pressure; celebrating inner strength; jealousy; love and loss; memories of loved ones; getting on and falling out; girlfriends and boyfriends; showing appreciation to people and animals; being unique; having a baby (simple explanation of conception); girls and puberty; boys and puberty; confidence in change; accepting change.
9-10	Cultural differences and how they can cause conflict; racism; rumours and name calling; types of bullying; enjoying and respecting other cultures; body image; self-recognition and self-worth; building self-esteem; safer online communications; rights and responsibilities online; online gaming and gambling; reducing screen time; dangers of online grooming; SMARRT internet safety rules; self and body-image; influence of online and media on body image; puberty for girls; puberty for boys; conception (including IVF); growing responsibility; coping with change.
10-11	Children’s universal rights; feeling welcome and valued; choices; consequences and rewards; group dynamics; democracy; having a voice; anti-social behaviour; role-modelling; perceptions of normality; understanding disability; understanding what transgender means; power struggles; understanding bullying; inclusion/exclusion; difference as conflict; difference as celebration; empathy; exploitation, including ‘county-lines’ and gang culture; love and loss; managing feelings; power and control; assertiveness; technology safety; responsibility with technology use; self-image; body image; puberty and feelings; conception to birth; reflections about

**“With God, all things are possible.”
Matthew 19.26**

change; physical attraction; respect and consent; boyfriends/girlfriends; sexting.

The grid below shows specific Health Education content for each year group:

AGE

4-5	Understanding feelings; identifying talents; being special; challenges; perseverance; goal-setting; overcoming obstacles; seeking help; physical activity; healthy food; sleep; keeping clean; being safe; respecting my body; growing up; growth and change; fun and fears; celebrations.
5-6	Feeling special and safe; rewards and feeling proud; consequences; setting goals; identifying successes and achievements; tackling new challenges; identifying and overcoming obstacles; feelings of success; keeping myself healthy; healthier lifestyle choices (including oral health); keeping clean; being safe; medicine safety/safety with household items; road safety; linking health and happiness; people who help us; changes in me; changes since being a baby; linking growing and learning; coping with change.
6-7	Hopes and fears for the year; recognising feelings; achieving realistic goals; perseverance; motivation; healthier choices; relaxation; healthy eating and nutrition; healthier snacks and sharing food; growing from young to old.
7-8	Self-identity and worth; positivity in challenges; responsible choices; giving and receiving compliments; difficult challenges and achieving success; dreams and ambitions; new challenges; motivation and enthusiasm; recognising and trying to overcome obstacles; evaluating learning processes; managing feelings; simple budgeting exercise; fitness challenges; food labelling and healthy swaps; attitudes towards drugs; keeping safe and shy it's important online and off line; respect for myself and others; healthy and safe choices; body changes at puberty.
8-9	What motivates behaviour; rewards and consequences; accepting self and others; understanding influences; hopes and dreams; overcoming disappointment; creating new, realistic dreams; achieving goals; resilience; positive attitudes; healthy friendships; group dynamics; smoking; alcohol; assertiveness; peer pressure; celebrating inner strength; jealousy; love and loss; memories of loved ones; body changes at puberty.
9-10	Being a citizen; rights and responsibilities; rewards and consequences; how behaviour affects groups; democracy, having a voice; participating; material wealth and happiness; future dreams; the importance of money; jobs and careers; dream job and how to get there; goals in different cultures; supporting others (charity); motivation; smoking, including vaping; alcohol; alcohol and anti-social behaviour; emergency aid; body image; relationships with food; healthy and safe choices; motivation and behaviour; changes in the body at puberty.
10-11	Choices, consequences and rewards; group dynamics; democracy, having a voice; emotions in success; making a difference in the world; motivation; recognising achievement; compliments; taking personal responsibility; how substances affect the body; exploitation, including 'county lines' and gang culture; emotional and mental health; managing stress; mental health; identifying mental health worries and sources of support; love and loss; managing feelings; power and control; assertiveness; technology safety; take responsibility with technology use; self-image; body image; impact of media; discernment; puberty; reflections about change; respect and consent.

**"With God, all things are possible."
Matthew 19.26**

**"With God, all things are possible."
Matthew 19.26**